



VIRAJ PROFILES PRIVATE LIMITED
Building A Sustainable Stainless World

— STAINLESS STEEL —
FASTENERS



STAINLESS STEEL FASTENERS

The Viraj fasteners division specializes in the manufacturing of stainless steel fasteners products. Viraj has sophisticated, state-of-the-art machines employed for production and stringent supervision that ensures flawless quality control over products. SPC analysis is used as a tool to supervise the ongoing processes. We have an in-house facility for inspection and testing to produce world class quality products. Multi stage inspection checks by a trained and skilled

workforce ensures that defect free products are delivered to customers. Our product range consists of more than 20,000 SKUs. Our customers span six continents and include the market leaders in every geography. Since its inception in 2006, the Viraj fastener division has become a world leader in the manufacturing of stainless steel fasteners and is a reputed brand worldwide.



GRADE:

304, 304L, 316, 316L, 316Ti, Alloy group A2 and A4.

PROPERTY CLASS:**For Bolt & Screws:**

A2-70, A2-80, A4-70, A4-80, F593C, F593D, F593G, F593H.

For Nut:

A2-70, A2-80, A4-70, A4-80, F594C, F594D, F594G, F594H, A2-035, A4-040.

For SHCS:

F837B, F837C, F837E, F837.

For Threaded rod:

A2-70, A2-80, A4-70, A4-80, F593C, F593D, F593G, F593H, CL1- B8, B8M.

PRODUCT RANGE:

Hexagon Head Bolt				Hexagon Head Screw			
DIN 931/ISO 4014		ANSI B 18.2.1		DIN 933/ISO 4017		ANSI B 18.2.1	
Size	Length	Size	Length	Size	Length	Size	Length
		1/4"	1 1/4" - 6"			1/4"	3/8" - 6"
		5/16"	1 1/4" - 7"			5/16"	1/2" - 7"
M5	25-100	3/8"	1 1/2" - 10"	M5	10-70	3/8"	5/8" - 8"
M6	25-150	7/16"	1 3/4" - 6"	M6	10-150	7/16"	3/4" - 6"
M8	30-180	1/2"	1 7/8" - 10"	M8	10-180	1/2"	3/4" - 8"
M10	35-250	9/16"	2" - 8"	M10	16-200	9/16"	1" - 8"
M12	40-250	5/8"	2" - 10"	M12	20-200	5/8"	1" - 8"
M14	45-250	3/4"	2 5/8" - 10"	M14	25-200	3/4"	1 1/2" - 8"
M16	50-250	7/8"	2 3/4" - 10"	M16	25-200	7/8"	1 1/2" - 8"
M18	60-250	1" 3	1/4" - 10"	M18	40-200	1"	1 3/4" - 8"
M20	60-250	1 1/8"	4" - 14"	M20	40-200	1 1/8"	2" - 6"
M22	70-250	1 1/4"	4" - 14"	M22	40-200	1 1/4"	2-1/2" - 6"
M24	80-250	1 3/8"	4 1/2" - 14"	M24	40-200	1 3/8"	3" - 6"
M27	90-350	1 1/2"	4 1/2" - 14"	M27	50-200	1 1/2"	3" - 6"
M30	90-350	-	-	M30	50-200	-	-
M33	110-350	-	-	M33	70-200	-	-
M36	110-350	-	-	M36	80-200	-	-

Hexagon Socket Head Cap Screw					
DIN912/ISO4762			ANSI B 18.3		
Size	Length		Size	Length	
	F/T	H/T		F/T	H/T
M5	10 - 70	30 - 70	3/8"	5/8" - 6"	1 3/4" - 6"
M6	10 - 100	35 - 150	7/16"	3/4" - 6"	2" - 6"
M8	12 - 160	40 - 160	1/2"	3/4" - 6"	2 1/4" - 6"
M10	16 - 150	45 - 150	5/8" 1	1/4" - 6"	2 1/2" - 6"
M12	20 - 150	55 - 150	3/4"	2" - 8"	3" - 8"
M14	30 - 150	60 - 150	7/8"	2" - 8"	3 1/4" - 8"
M16	30 - 150	65 - 150	1"	2" - 8"	3 1/2" - 8"
M18	50 - 200	70 - 200	-	-	-
M20	50 - 200	80 - 200	-	-	-
M22	50 - 200	80 - 200	-	-	-
M24	50 - 200	90 - 200	-	-	-

A2-80 / A4-80 - GRADE UP TO M20

Round Head Square Neck Bolt or Carriage Bolt				
DIN 603			ANSI B 18.5	
Size	Length	Size	Length	H/T
			F/T	
M 5	16 - 65	1/4"	5/8" - 3"	1-1/4" - 4"
M 6	16 - 80	5/16"	3/4" - 4"	1-1/2" - 6"
M 8	20 - 100	3/8"	3/4" - 4"	1-3/4" - 6"
M 10	20 - 100	-		

Hex Wood/Lag Screw	
DIN 571	
Size	Length
M5	25 - 70
M6	25 - 100
M8	30 - 150
M10	40 - 150
M12	45 - 150

Hexagon Socket Button Head Screw			
ISO7380-1		ANSI B 18.3	
Size	Length	Size	Length
M3	10 - 40		
M4	10 - 50		
M5	10 - 60		
M6	10 - 100	1/4"	3/8" - 4"
M8	12 - 150	5/16"	1/2" - 6"
M10	16 - 150	3/8"	5/8" - 6"
M12	20 - 150	1/2"	3/4" - 6"

Hexagon Socket Flange Button Head Screw			
ISO7380-2			
Size	Length	Size	Length
M3	10 - 40	M8	12 - 150
M4	10 - 50	M10	16 - 150
M5	10 - 60	M12	20 - 150
M6	10 - 100		

Hexagon Socket Countersunk Head Cap Screw						
DIN7991/ISO10642				ANSI B 18.3		
Size	Length			Size	Length	
	F/T	H/T DIN	H/T ISO		F/T	H/T
		7991	10642			
M3	10 - 40	25 - 40	30 - 40	-	-	-
M4	10 - 50	30 - 50	30 - 50	-	-	-
M5	10 - 75	35 - 75	35 - 75	-	-	-
M6	10 - 100	40 - 100	40 - 100	-	-	-
M8	12 - 150	50 - 150	50 - 150	1/4"	1/2" - 4"	1 3/4" - 4"
M10	16 - 200	50 - 200	55 - 200	5/16"	1/2" - 4"	2" - 6"
M12	20 - 200	60 - 200	65 - 200	3/8"	5/8" - 6"	2 1/4" - 8"
M14	40 - 200	60 - 200	70 - 200	1/2"	1" - 6"	2 1/2" - 8"
M16	40 - 200	70 - 200	80 - 200	5/8"	1 5/8" - 8"	3 1/4" - 8"
M18	40 - 200	70 - 200	-	3/4"	1 5/8" - 8"	3 1/2" - 8"
M20	40 - 200	80 - 200	100 - 200	-	-	-

Slotted CSK Head Screw DIN 963		Slotted Raised CSK Oval Head Screw DIN 964		Slotted Chesse Head Screw DIN 84		Slotted Pan Head Screw DIN 85	
Size	Length	Size	Length	Size	Length	Size	Length
M3	10 - 40	M3	10 - 40	M3	10 - 40	M3	10 - 40
M4	10 - 50	M4	10 - 50	M4	10 - 50	M4	10 - 50
M5	10 - 60	M5	10 - 60	M5	10 - 60	M5	10 - 60
M6	10 - 80	M6	10 - 80	M6	10 - 80	M6	10 - 80

Cross Recessed CSK Flat Head Screw DIN 965 (TYPE H&Z/TORX)		Cross Recessed Raised CSK Oval Head Screw DIN 966 (TYPE H & Z)		Cross Recessed Raised Cheese DIN 7985 (TYPE H&Z/TORX)	
Size	Length	Size	Length	Size	Length
M3	10 - 40	M3	10 - 40	M3	10 - 40
M4	10 - 50	M4	10 - 50	M4	10 - 50
M5	10 - 75	M5	10 - 75	M5	10 - 75
M6	10 - 100	M6	10 - 100	M6	10 - 100
M8	12 - 150	M8	12 - 150	M8	12 - 150
M10	16 - 150	M10	16 - 150	M10	16 - 150

Slotted Pan Head Tapping Screw DIN-7971		Slotted CSK Flat Head Tapping Screw DIN-7972		Slotted Raised CSK (Oval) Head Tapping Screw DIN-7973	
Size	Length	Size	Length	Size	Length
ST 2.9	9.5 - 38	ST 2.9	9.5 - 38	ST 2.9	9.5 - 38
ST 3.5	9.5 - 38	ST 3.5	9.5 - 38	ST 3.5	9.5 - 38
ST 3.9	9.5 - 38	ST 3.9	9.5 - 38	ST 3.9	9.5 - 38
ST 4.2	9.5 - 50	ST 4.2	9.5 - 50	ST 4.2	9.5 - 50
ST 4.8	9.5 - 60	ST 4.8	9.5 - 60	ST 4.8	9.5 - 60
ST 5.5	13 - 60	ST 5.5	13 - 60	ST 5.5	13 - 60
ST 6.3	13 - 60	ST 6.3	13 - 60	ST 6.3	13 - 60

Cross Recessed Pan Head Tapping Screw (TYPE H & Z) DIN-7981		Cross Recessed CSK Flat Head Tapping Screw (TYPE H & Z) DIN-7982		Cross Recessed Raised CSK (Oval) Head Tapping Screw (TYPE H & Z) DIN-7983	
Size	Length	Size	Length	Size	Length
ST 2.9	9.5 - 38	ST 2.9	9.5 - 38	ST 2.9	9.5 - 38
ST 3.5	9.5 - 38	ST 3.5	9.5 - 38	ST 3.5	9.5 - 38
ST 3.9	9.5 - 38	ST 3.9	9.5 - 38	ST 3.9	9.5 - 38
ST 4.2	9.5 - 50	ST 4.2	9.5 - 50	ST 4.2	9.5 - 50
ST 4.8	9.5 - 60	ST 4.8	9.5 - 60	ST 4.8	9.5 - 60
ST 4.8	13 - 60	ST 5.5	13 - 60	ST 5.5	13 - 60
ST 6.3	13 - 60	ST 6.3	13 - 60	ST 6.3	13 - 60

ANSI B 18.6.3 Cross Recessed Pan Head Machine Screw		Cross Recessed Truss Head Machine Screw		Cross Recessed Flat CSK Head Machine Screw		Cross Recessed Raised CSK Oval Head Machine	
Size	Length	Size	Length	Size	Length	Size	Length
1/4"	3/8" - 4"	1/4"	3/8" - 4"	1/4"	3/8" - 4"	1/4"	3/8" - 4"
5/16"	1/2" - 5"	-	-	5/16"	1/2" - 5"	-	-
3/8"	7/8" - 5"	-	-	-	-	-	-

Hexagon flange bolt (FT) - DIN 6921		
Size	Length	
	min	max
M8	16	60
M10	16	60
M12	20	70

Hexalobular socket CSK Flat Head Screw ISO 14581			Hexalobular raised CSK Head Screw ISO 14581		
Size	Len (Min)	Len (Max)	Size	Len (Min)	Len (Max)
M3	10	40	M3	10	40
M4	10	40	M4	10	40
M5	10	50	M5	10	50
M6	12	100	M6	12	100
M8	12	100	M8	12	100
M10	16	100	M10	16	100

Hexalobular Pan Hd. Tapping Sc. (Cross Recess) ISO 14585			Hexalobular CSK Tapping Sc. (Cross Recess) ISO 14586		
Size	Len (Min)	Len (Max)	Size	Len (Min)	Len (Max)
ST 2.9	9.5	38	ST 2.9	9.5	38
ST 3.5	9.5	38	ST 3.5	9.5	38
ST 4.2	9.5	50	ST 4.2	9.5	50
ST 4.8	9.5	60	ST 4.8	9.5	60
ST 5.5	13	60	ST 5.5	13	60
ST 6.3	13	60	ST 6.3	13	60

Hexalobular Raised CSK (Oval) Head Tapping Screw ISO 14587			
Size	Length	Size	Length
ST 2.9	9.5 - 38	ST 4.8	9.5 - 60
ST 3.5	9.5 - 38	ST 5.5	13 - 60
ST 4.2	9.5 - 50	ST 6.3	13 - 60

DIN934 / ISO4032	DIN439 / ISO4035	ANSI B 18.2.2		
Hexagon Nuts	Hexagon Thin Nuts	Heavy Hexagon Nuts	Hexagon Nuts	Hexagon Jam Nuts
M5 - M27	M6 - M27	1/4" - 7/8"	1/4" - 1"	1/4" - 1"

DIN557	DIN562	DIN928	DIN929
Square Nuts	Square Thin Nuts	Square Weld Nuts	Hexagon Weld Nuts
M5 - M12	M6 - M8	M6 - M10	M5 - M12

DIN982	DIN985	IFI 100 - 107
Thick Nyloc Nuts	Thin Nyloc Nuts	Thick Nyloc Nuts
M 6 - M 12	M6 - M12	1/4" - 3/8"

Nylock Nut-Thick	Hexagon Flange Nut	Hexagon Flange Nut with Serration
ISO7040	IFI-145 / 18.16.4	IFI-145 / 18.16.4
M10 - M12	1/4" - 1/2"	1/4" - 1/2"

DIN6923		BS 1083
Hexagon Flange Nuts	Hexagon Flange Nuts with Serration	Hexagon Nuts
M 6 - M 12	M 6 - M 12	1/4" - 1"

JIS B1181	Hexagon Nut	JIS B1190	Hexagon Flange Nut Size
Size	M 6 to M 16 (M 20, M 24 - New Developmet)	Size	M6 to M12

ISO4033	ISO8675	DIN936
Hexagon Nut	Hexagon Thin Nut (Fine Pitch)	Hexagon Thin Nut
M 6 - M 20	M6 to M24	M6 to M20

Threaded Rod			ANSI B 18.31.3/IFI 136/ ASTM A 193/BSW (CLASS-1)	
DIN 975/DIN 976			Size	Length
	Size	Length		
Long Length	M5	0.50 Mtr - 1.0 Mtr	1/4"	0.5 mtr - 3 mtr
	M6-M36	0.5 mtr - 3 mtr		3' - 12'
Short Length	M6	30 - 160	5/16" - 11/2"	0.5 mtr - 3 mtr
				3' - 12'
Short Length	M8	30 - 250, 300 - 490		
	M10	40 - 250, 300 - 490		
	M12	50 - 250, 300 - 490		
	M14	50 - 250, 300 - 490		
	M16	60 - 250, 300 - 490		
	M18	60 - 250, 300 - 490		
	M20	60 - 250, 300 - 490		

Hexagon socket thin head cap screw with Blind hole DIN6912, HT		Hexagon socket thin head cap screw DIN7984, HT	
Size	Length	Size	Length
M6	25 - 100	M6	30 - 150
M8	25 - 150	M8	35 - 150
M10	30 - 150	M 10	40 - 150
M12	45 - 150	M 12	50 - 150

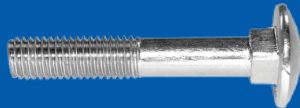
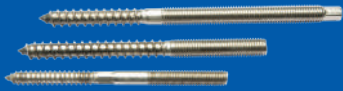
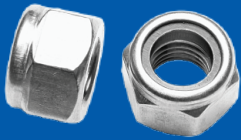
Dowel Screw Hexagon End		Dowel Screw Middle Hex		Dowel Screw Without Hex	
Size	Length	Size	Length	Size	Length
M10	160 - 250	M10	80 - 200	M6	50 - 160
M12	200 - 300	M12	100 - 250	M8	60 - 160

ISO14579-FT		Hexalobular Socket head cap screw		ISO14579-HT		Hexalobular Socket head cap screw	
Size.	Min.	Max.	Size.	Min.	Max.	Size.	Max.
M6	10	100	M6	35	150		
M8	12	160	M8	40	160		
M10	16	150	M10	45	150		
M12	20	150	M12	55	150		

JIS B1180-FT		Hexagon head screw		JIS B1180-HT		Hexagon head Bolt	
Size.	Min.	Max.	Size.	Min.	Max.	Size.	Max.
M6	10	150	M6	30	150		
M8	12	150	M8	40	150		
M10	16	250	M10	45	250		
M12	20	200	M12	50	250		
M16	25	200	M16	65	250		
M18	40	200	M18	70	250		
M20	40	200	M20	80	250		
M24	40	200	M24	90	250		

Testing Facilities	Certifications	Certified from (TUV)
Tensile Test	EN-ISO 10204-3.1	ISO 9001-2008
Impact Test		CE
Hardness Test	EN-ISO 10204-3.2	ADW2 / PED
IGC Test	-	PED

Following RoHS compliance





VIRAJ PROFILES PRIVATE LIMITED

Building A Sustainable Stainless World

Corporate Office:

Viraj Profiles Private Limited
Viraj Tower, Ground & 1st Floor,
Junction of Andheri Kurla Road,
Western Express Highway, Near
Land Mark Building, Andheri (East),
Mumbai - 400069, India
Ph.: +91 22 6276 6200

Regd. Marketing Office:

Viraj Profiles Private Limited
G-34 MIDC Tarapur
Industrial Area, Boisar,
Dist. Palghar,
Maharashtra - 401 506, India
Ph.: +91 2525 660 600

Delhi Office:

Viraj Profiles Private Limited
D-7, 2nd Floor, Ring Road,
D Block South Extension II,
New Delhi 110049, India.
Ph.: +91 11 4021 9804

CIN No: U28113MH1996PTC096835